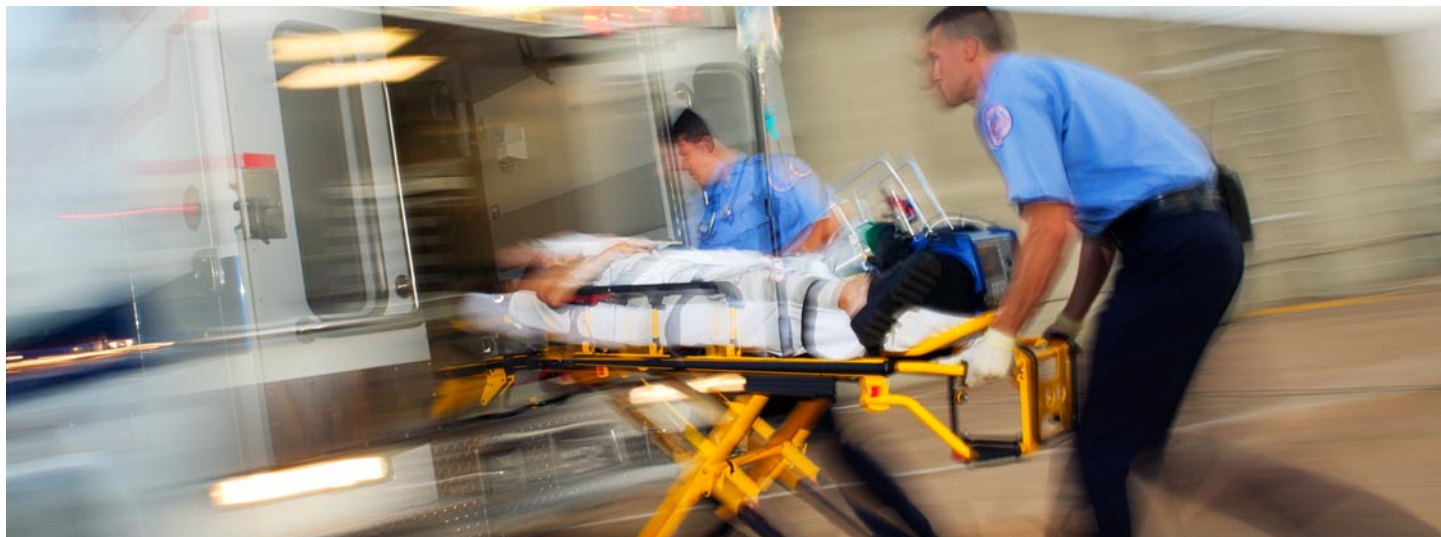


EMT-II PARAMEDIC, ADVANCED CERTIFICATE



College(s): MX

Program Code: 0265

The AC in EMT (II)–Paramedic is awarded to students who successfully complete the Paramedic Core Curriculum. Courses run for three consecutive semesters starting each fall. Applications are accepted the previous spring, successful completion of the core curriculum provide eligibility to take the national certification exam (National Registry of Emergency Medical Technicians). After passing the national certification exam, applicants may apply to various state agencies for a state paramedic license, including in Illinois to the Illinois Department of Public Health. The Malcolm X Paramedic program is accredited by the Commission on Accreditation of Allied Health Education Programs (www.caahep.org) upon the recommendation of the Committee on Accreditation of Educational Programs for the Emergency Medical Services Professions (CoAEMSP). For CAAHEP contact information, please visit www.caahep.org. The program is approved by the IL Dept. of Public Health, Division of Emergency Medical Services and Highway through JHS Cook County (Resource) Hospital.

This selective admissions program requires students to submit a separate application or to take additional action before enrolling.

For more information on the EMT II - Paramedic AC at Malcolm X College, visit the program website (<http://www.ccc.edu/colleges/malcolm-x/departments/Pages/Paramedic-Program.aspx>)

Pathway

This is an **example course sequence** for students interested in EMT (II)–Paramedic. If this pathway is followed as outlined, student will earn an Advanced Certificate (AC) in EMT (II)–Paramedic. This does not represent a contract, nor does it guarantee course availability.

Malcolm X College offers the only paramedic program in the City of Chicago. It offers an Advanced Certificate (AC) as well as an Associate in Applied Science degree (AAS) in this professional specialty. Successful completion of the Paramedic Core Curriculum culminates in the Advanced Certificate, and additional general education courses enables the paramedic student to attain an AAS degree. Completion of the degree can broaden the student's marketability as well as provide a strong basis for continued professional learning.

This program is presented as a collaborative effort by Malcolm X College and the Chicago EMS Region XI, which includes the Chicago Fire Department, Advocate Illinois Masonic Medical Center, JHS Cook County Hospital, Northwestern Memorial Hospital, University of Chicago Hospitals and regional Associate Hospitals.

Semester-by-Semester Program Plan for Full-Time Student

Semester 1		Hours
EMT 212	Essentials of Paramedic Medicine I	9
EMT 222	Paramedic Medicine Practicum I	5.5
Hours		14.5
Semester 2		
EMT 213	Essentials of Paramedic Medicine II	9
EMT 224	Paramedic Medicine Practicum II	7
Hours		16
Semester 3		
EMT 227	Paramedic Medicine Field Internship	6
Hours		6
Total Hours		36.5

Choose your courses with your College Advisor.

Program Requirements

Code	Title	Hours
Required Program Core		
EMT 212	Essentials of Paramedic Medicine I	9

EMT 213	Essentials of Paramedic Medicine II	9
Required Work-Based Learning Courses		
EMT 222	Paramedic Medicine Practicum I	5.5
EMT 224	Paramedic Medicine Practicum II	7
EMT 227	Paramedic Medicine Field Internship	6
Total Hours		36.5

Program Admission Requirements

Courses run for three consecutive semesters starting each fall semester. Applications are accepted the previous spring. To be considered for admission the applicant must:

- Be at least 18 years of age
- Graduate from an accredited high school or earn a GED
- Be currently licensed by the State of Illinois as an EMT-B.
- Demonstrate an aptitude in college-level science course by earning a passing grade of C or better in 4 credit hour (with a lab) General Biology, Anatomy and Physiology, General Chemistry, articulated military course or successfully complete an equivalency exam. (CCC courses that apply include BIOLOGY 116 Introduction to Anatomy And Physiology, BIOLOGY 121 Biology I, BIOLOGY 226 Human Structure and Function I, and CHEM 201 General Chemistry I)
- Have a current CPR card.
- Achieve acceptable scores on admissions examination.
- Admissions cumulative GPA of 2.5 or higher.
- Submit official college transcripts
- Submit, by deadline, completed program application with transcripts, to the Paramedic Program Director at Malcolm X College.
- Ambulance experience as an EMT-B by start of program is strongly recommended.

Students enrolled in a current Spring semester EMT class from any other college who have not passed the EMT licensing exam by the application deadline, are not eligible to apply. Students enrolled in the Spring semester EMT class at Malcolm X College are eligible to apply with a current course grade of B or better.

Applicant Interviews and Student Selection

Interviews with the EMS Region XI Admissions Committee are granted to those applicants who have met or exceeded admission criteria. Selection of candidates for this program is highly competitive and selections are made based on interview. Evaluation of applicant ability is based on academic history, EMS work experience, references, and communication skills. Emphasis is placed on academic history as demonstrated by GPA, and motivation as demonstrated by commitment and adaptability to the EMS field.

For more information on admissions requirements and the application process, visit the program website (<http://www.ccc.edu/colleges/malcolm-x/departments/Pages/Paramedic-Program.aspx>).

Careers

This program can prepare students for the jobs listed below. Click on each one to learn more, including average earnings, annual job openings, and how much education people in that field have. For additional guidance and resources on career options, current City Colleges students

and alumni can contact the Career Services Office (<https://www.ccc.edu/departments/Pages/Career-Services.aspx>).

Emergency Medical Technicians Job Description

Assess injuries and illnesses and administer basic emergency medical care. May transport injured or sick persons to medical facilities.

Salary Based on Experience Level

Take a look at the average hourly/annual earnings for this career in Cook County

Lightcast earnings figures are based on OES data from the BLS and include base rate, cost of living allowances, guaranteed pay, hazardous-duty pay, incentive pay (including commissions and bonuses), on-call pay, and tips.

Annual Wages	
Entry-Level 10 th Percentile	\$41,752
Median 50 th Percentile	\$48,973
Senior-Level 90 th Percentile	\$151,502

Hourly Wages	
Entry-Level 10 th Percentile	\$20
Median 50 th Percentile	\$24
Senior-Level 90 th Percentile	\$73

Annual Job Openings

162 annual openings in Cook County

National Education Attainment

Here, you can see the level of education that people in this career complete.

Degree Program	% of Jobs
A high school diploma or less	10.94%
A certificate	42.57%
Some college	29.85%
An Associate degree	11.75%
A Bachelor's degree	4.89%
A Master's or Professional degree	0.00%
A Doctoral degree or more	0.00%

4.89% continue their education beyond an associate degree

Paramedics Job Description

Administer basic or advanced emergency medical care and assess injuries and illnesses. May administer medication intravenously, use equipment such as EKGs, or administer advanced life support to sick or injured individuals.

Salary Based on Experience Level

Take a look at the average hourly/annual earnings for this career in Cook County

Lightcast earnings figures are based on OES data from the BLS and include base rate, cost of living allowances, guaranteed pay, hazardous-duty pay, incentive pay (including commissions and bonuses), on-call pay, and tips.

Annual Wages

Entry-Level 10 th Percentile	\$52,887
Median 50 th Percentile	\$82,031
Senior-Level 90 th Percentile	\$166,539

Hourly Wages

Entry-Level 10 th Percentile	\$25
Median 50 th Percentile	\$39
Senior-Level 90 th Percentile	\$80

Annual Job Openings

67 annual openings in Cook County

National Education Attainment

Here, you can see the level of education that people in this career complete.

Degree Program	% of Jobs
A high school diploma or less	10.94%
A certificate	42.57%
Some college	29.85%
An Associate degree	11.75%
A Bachelor's degree	4.89%
A Master's or Professional degree	0.00%
A Doctoral degree or more	0.00%

4.89% continue their education beyond an associate degree