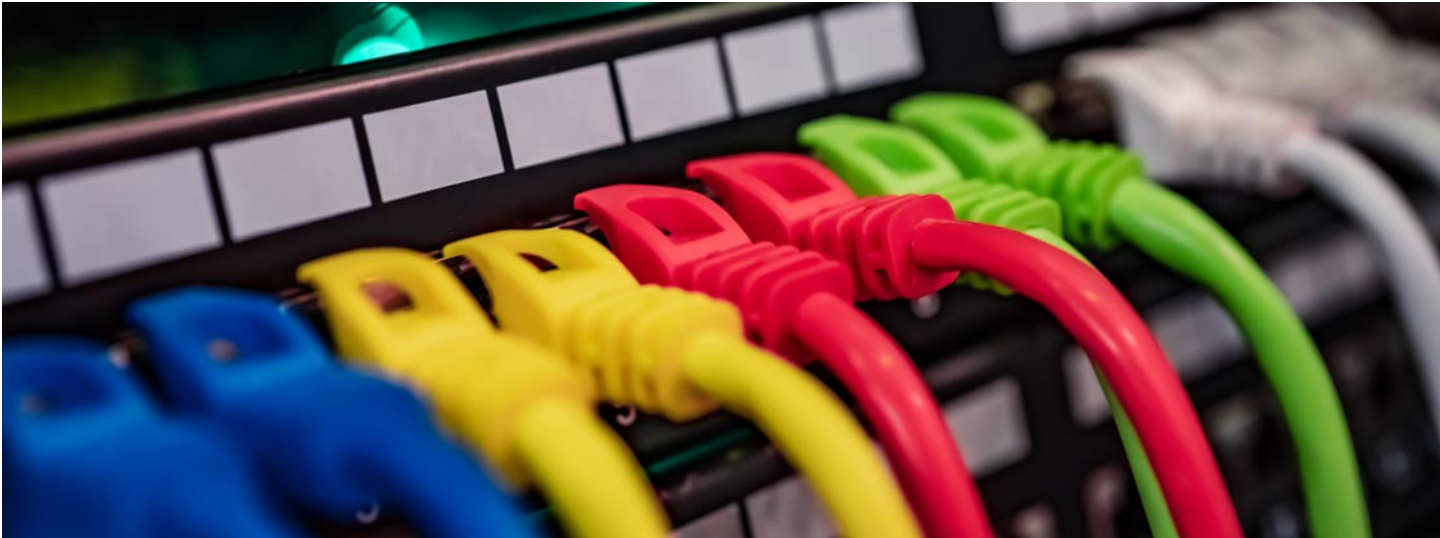


# COMMUNICATIONS TECHNOLOGY, BASIC CERTIFICATE



College(s): DA

Program Code: 0704

The Basic Certificate program in Communications Technology prepares students to become an apprentice under the tutelage of a union electrical contractor. Communications Journeymen and Apprentices install and maintain structured wiring and electronic systems in residential, commercial, and industrial settings.

## Program Requirements

Code	Title	Hours
<b>Required Program Core</b>		
432IBEW 704	Construction Technology	4.5
432IBEW 705	Print Reading I	3.5
432IBEW 714	Technical Math I	3
432IBEW 716	Electronics	4.5
432IBEW 717	Structured Wiring	4.5
Total Hours		20

### Pathway

This is an **example course sequence** for students interested in pursuing Communications Technology. It does not represent a contract, nor does it guarantee course availability. If this pathway is followed as outlined, you will earn a Basic Certificate (BC) in Communications Technology.

## Semester-by-Semester Program Plan for Full-Time Students

Semester 1		Hours
432IBEW 704	Construction Technology	4.5
432IBEW 705	Print Reading I	3.5
432IBEW 714	Technical Math I	3
432IBEW 716	Electronics	4.5

432IBEW 717	Structured Wiring	4.5
Hours		20
Total Hours		20

Choose your courses with your College Advisor.

## Careers

This program can prepare students for the jobs listed below. Click on each one to learn more, including average earnings, annual job openings, and how much education people in that field have. For additional guidance and resources on career options, current City Colleges students and alumni can contact the Career Services Office (<https://www.ccc.edu/departments/Pages/Career-Services.aspx>).

## Helpers--Electricians

### Job Description

Help electricians by performing duties requiring less skill. Duties include using, supplying, or holding materials or tools, and cleaning work area and equipment.

### Salary Based on Experience Level

Take a look at the average hourly/annual earnings for this career in Cook County

Lightcast earnings figures are based on OES data from the BLS and include base rate, cost of living allowances, guaranteed pay, hazardous-duty pay, incentive pay (including commissions and bonuses), on-call pay, and tips.

<b>Annual Wages</b>	
Entry-Level 10 <sup>th</sup> Percentile	\$25,291
Median 50 <sup>th</sup> Percentile	\$41,191
Senior-Level 90 <sup>th</sup> Percentile	\$65,289

### Hourly Wages

Entry-Level 10 <sup>th</sup> Percentile	\$12
Median 50 <sup>th</sup> Percentile	\$20
Senior-Level 90 <sup>th</sup> Percentile	\$31

### Annual Job Openings

18 annual openings in Cook County

### National Education Attainment

Here, you can see the level of education that people in this career complete.

Degree Program	% of Jobs
A high school diploma or less	79.78%
A certificate	19.83%
Some college	0.14%
An Associate degree	0.25%
A Bachelor's degree	0.00%
A Master's or Professional degree	0.00%
A Doctoral degree or more	0.00%

0.00% continue their education beyond an associate degree